

# Hurricane™

The complete Electric Dispensive System



## The right tool for dispensing Oil, Gear Lube, Anti-freeze and Automatic Transmission Fluid!

- Start pumping oil in just 10 minutes. Installation is quick and simple
- No air? No problem. Plug the Hurricane in to the electrical outlet and it is ready for use!
- Always ready. Leave the Hurricane plugged in and it is ready for use any time.
- Handle a range of products. Synthetic and petroleum based oils, ATF and antifreeze (up to 50/50 mix)
- Configurations that fit your need. Available in taper version and in 2.4 and 7.6 meter hose version.

# Hurricane Features



1. Automatic nozzle
2. Easy-to-carry handle
3. 2.4 or 7.6 m (8 or 25 ft) hose
4. Accurate and easy-to-read digital display
5. 270° swivel
6. Convenient hose storage
7. Quick-change 5.08 cm (2 inch) NPT bung adapter
8. Inlet filter (pictured)

## Easy to use!

Simple two button operation

Leave it plugged in and it is always ready for use



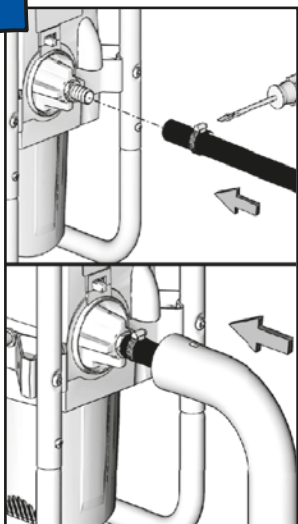
## A complete dispense system with everything you need:

- Electric pump with 1.8 m (6 ft) grounded power cord
- Digital metering standard on all units
- Quick-change bung adapter
- Installation hardware



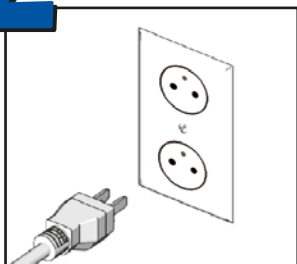
## Dispensing in three easy steps:

# 1



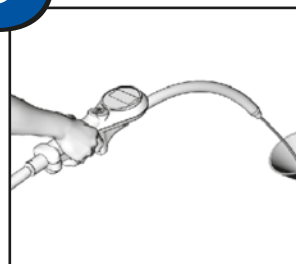
Attach hose and drum tube to unit

# 2



Plug into outlet

# 3



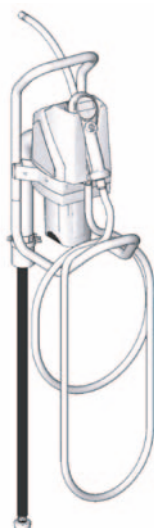
Prime.  
Unit is ready to pump

## Complete system in a box

### Get started – FAST!

- Go from the box to pumping oil in just 10 minutes!
- The only tools you need are a screwdriver and a utility knife.
- Fits any container up to 1.1 m (44 inch) tall with a 5.08 cm (2 inch) NPT opening
- No tools necessary to change drums
- Measures in liters, quarts, gallons or pints

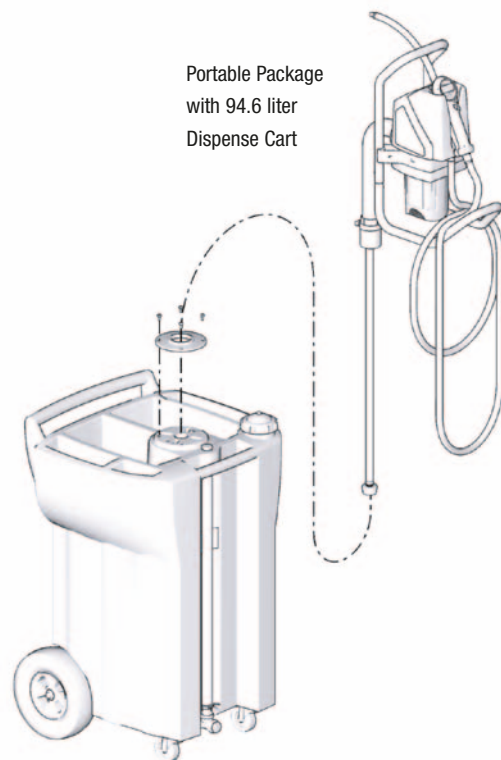
Version with Hose



Tapper version



Portable Package  
with 94.6 liter  
Dispense Cart





# Technical Specifications

Hurricane™ - The complete Electric Dispense System

Voltage .....	220 Volts or 110 Volts
Maximum Current.....	6 Amps
Flow Rate .....	6.0 lpm (1.50 gpm)
Maximum container height.....	1.1 m (44 in)
Weight (varies by model) .....	up to 9 kg (20 lbs)
Meter accuracy.....	± 1.5%
Operating pressure range .....	1.3 to 13.7 bar (20 to 200 psi)
Weight (varies depending on model).....	5.4 – 9 kg (12.0 – 19.8 lbs)
Storage Temperature Range .....	-40° to 49° C (-40° to 120° F)
Operating Temperature Range .....	-0° to 49° C (32° to 120° F)
Wetted Parts.....	aluminum, polyurethane (ester based), polypropylene, stainless steel, brass, nylon, nitrile rubber, steel, zinc
Fluid Compatibility .....	motor oils, automatic transmission fluid, antifreeze (50/50 mix), gear lubricant
Accuracy* .....	±1.5%
Repeatability* .....	±.45%
Sound pressure level* .....	66.7 dB(A)
Sound power level* .....	78.1 dB(A)
Instruction manual.....	311216

\* Values determined with 10W30 motor oil at 26° C (79° F). Each dispense consisted of 1 gallon of fluid. Values vary with fluid pressure and viscosity. Sound levels measured per ISO 9614.

## Ordering Information

### Hurricane Dispense Systems (European version)

- 249298 Hurricane metered tapper unit
- 249299 Hurricane 2.4 m (8 ft.) hose and meter
- 249300 Hurricane 7.6 m (25 ft.) hose and meter

### Hurricane Dispense Systems International version\*

- 248920 Hurricane metered tapper unit
- 248919 Hurricane 2.4 m (8 ft.) hose and meter
- 249292 Hurricane 7.6 m (25 ft.) hose and meter

### Hurricane Portable Package with 94.6 liters (25 gallon)

- Dispense Cart (European version)
- 249822 Hurricane metered tapper unit
- 249823 Hurricane 2.4 m (8 ft.) hose and meter
- 249824 Hurricane 7.6 m (25 ft.) hose and meter

### Hurricane Portable Package with 94.6 liters (25 gallon)

- Dispense Cart (International version)\*
- 249796 Hurricane metered tapper unit
- 249784 Hurricane 2.4 m (8 ft.) hose and meter
- 249820 Hurricane 7.6 m (25 ft.) hose and meter

### Accessories

- 253683 Hurricane caster base counterweight
- 249332 Wall mount bracket

\* International versions of Hurricane come without power cable

† US versions of Hurricane are 110 volts and come with US power cable



GRACO N.V. Industrieterrein Oude Bunders  
Slakweidestraat 31 • B-3630 Maasmechelen  
Tel: +32 (89) 770 700 • Fax: +32 (89) 770 777  
E-mail: info@graco.be • http://www.graco.com

©2008 Graco Inc. Form No. 336696E (rev. B) 07/11 Printed in Europe.  
All other brand names or marks are used for identification purposes and are trademarks of their respective owners. All written and visual data contained in this document are based on the latest product information available at the time of publication. Graco reserves the right to make changes at any time without notice.